

- New Industry Standard for compact high powered x-ray for heat sink component and multi-layered circuit board inspection
- 15.5" x 21" parts handling capacity
- 4"/2" dual view Image Intensifier with HD camera
- Large-board, high density heat sink packaging inspection capability
- Flexible and EASY-TO-OPERATE
- Low-maintenance
- 2-axis X/Y manual manipulator
- Tilt/Rotate Fixture Option
- Windows 7 Pro image processor (standard) with PXi-Pro Image Analysis
- Worldwide service and parts support



CONTROL INTERFACE

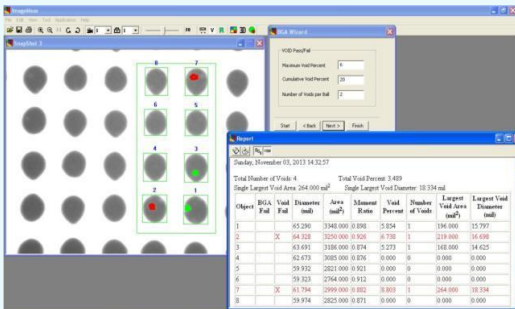


- Integrated x-ray controls
- Independent power and standby keys
- Magnification, Zoom, & Image Gain adjustment settings
- Sample tilt/rotation oblique angle (optional)
- Manual X-Y table motion controls

DISPLAY / ANALYSIS

PXi-Pro Image Analysis Software

- Frame averaging and quad view analysis
- Wide range of image enhancement and analysis tools (specific tool sets for QFN, BGA, Flip Chip, Discrete, and Gull Wing inspection)
- Modules for enhanced measurement capability
- Image storage and retrieval in tiff, bmp, and jpg formats



SPECIFICATIONS

Physical Dimensions

Dimensions	57" (H) x 33" (W) x 44" (D)
.....	142cm (H) x 84 cm (W) x 112cm (D)
Footprint.....	10.0 sq. ft. (0.86 sq. m)
Weight.....	1200 lbs. (544 kg)
Sample load height.....	Variable
Safe operating temperature.....	32° to 99° F (0 to 40° C)
Power consumption.....	500 watts at 120 VAC
Line voltage.....	110 /230 VAC 50/60 Hz

X-Ray Source

Energy	130kV, 0.356mA
Power.....	16 Watts maximum
Focal spot size	5 microns (auto adjusting w/power)

Image Detector

Detector type.....	4" /2" (10cm/5 cm) dual view X-ray image intensifier
Camera	HD, 1920 x 1080 pixels with zoom lens
Video output.....	USB 3.0
Video display.....	High-resolution 23" flat panel LCD color monitor

Image Performance

Field-of-View.....	Variable
Max inspection area.....	15.5" (X) x 18" (Y) on table surface
.....	39.4cm (X) x45.7cm (Y)
Max Board Handling.....	15.5" x 21" Board Size
Spatial resolution.....	>40 lp/mm
Magnification.....	>665X

Safety / Regulatory

Fail safe, interlocked enclosure. Complies with all U.S. and International standards for cabinet radiography systems. This product is in conformity with all applicable CDRH directives. CE compliant.